

C-8000

Hydraulic Mobile Pick 'n' Carry Crane



THE POWER OF RUGGEDNESS

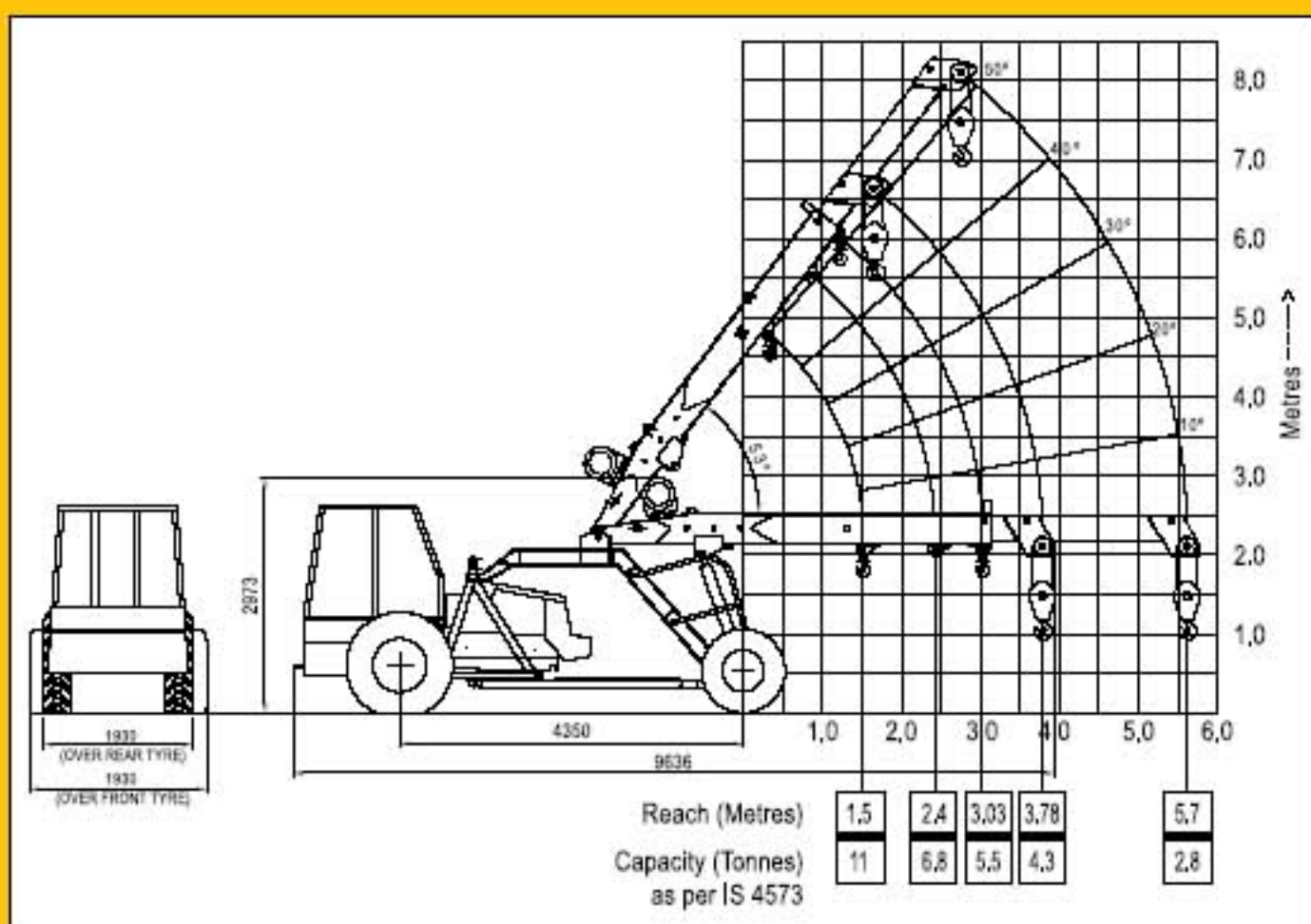
- Increased Capacity
- New Technology Control Valve for precision handling



Pick 'n' Carry Crane C-8000

SALIENT FEATURES :

- 2 Part telescopic boom hydraulically extendable for more outreach and high lift.
- Heavy duty transmission specifically designed for crane application.
- Heavy duty winch motor for hoisting.
- Articulated chassis for short turning radius.
- New Technology Control Valve for precision handling



Specifications :

Engine		Tyres	
Make & Model	Simpson S-433 Four Cylinder, Water Cooled Diesel Engine Rated power for crane 49 BHP @ 2200 RPM (Max continuous engine rating 59 HP @ 2300 RPM) or equivalent	Front	10.00x20-16PR(Four Nos.)
		Rear	13.00x24-12PR (Two Nos.)
Transmission		Boom	
Type	Heavy duty transmission developed specially for crane application. Sliding Mesh, spur teeth gearbox. Six forward and two reverse speeds with high and low selector lever	Telescoping	Heavy duty, Two part box type hydraulically operated
Speed	Travel Speed 25 Kmph - restricted as per safety norms (without load)	Derricking	Through double acting jacks
Clutch	Single plate, heavy duty dry friction type clutch plate especially designed for crane application.	Hoist Mechanism	
		Hoist	Four falls, hydraulic winch. Rope dia 13mm
Steering		Hydraulic System	
Type	Articulated power steering, hydraulically controlled through 2 double acting jacks	Pump	Pin Vane Type Hydraulic pump
Articulation	Upto 56°	Control Valve	4 spool control valve with built in pressure relief for precision control.
Turning Radius	Minimum 5.2m	Hydraulic Filter	Suction line has a 100 mesh inline strainer while return line has 25 micron full flow filter
Operational Timings (no load at rated engine RPM)		Electrical System	
Steering (lock to lock)	6-10 secs	Type	12V Single battery, Negative earth
Boom Raising	18-22 secs	Capacities	
Boom Lowering	14-18 secs	Fuel Tank	45 Ltrs.
Telescoping Extension in	7-9 secs	Hydraulic Tank	90 Ltrs.
Telescoping Extension out	9-11 secs	Axle Reduction	2.45 Ltrs
Hoist Line Speed	24m/min (Single line)	Operating Weight (Kgs)	8200 Kg.
Brakes		Safety System	
Front Wheel	Pneumatically assisted hydraulic brakes	• Overload audio warning system.	• Overhoist audio warning system
Rear Wheel	Mechanical shoe brakes actuated through a slave cylinder	• Safety brakes on hoist	• Hose protection failure device
Parking	Mechanically actuated at rear wheels	• Cylinder guard for protection	
Track		Standard Accessories	
Front	1880mm (center of twin wheels)	• All weather cabin	• Front Bumper
Rear	1570mm (center of wheels)	• Lift Cylinder Guard	• Rear View Mirror
			• Reflectors
			• Turn & Reverse lamp
		Optional Accessories	
		• Fly jib : 4.1m length	• Fire Extinguisher
		• Air Conditioned Cabin	• Steering Wheel
		• Canopy	• Safe Load Indicator with hydraulic cut-off
			• Spark Arrestor
			• Extra hooks